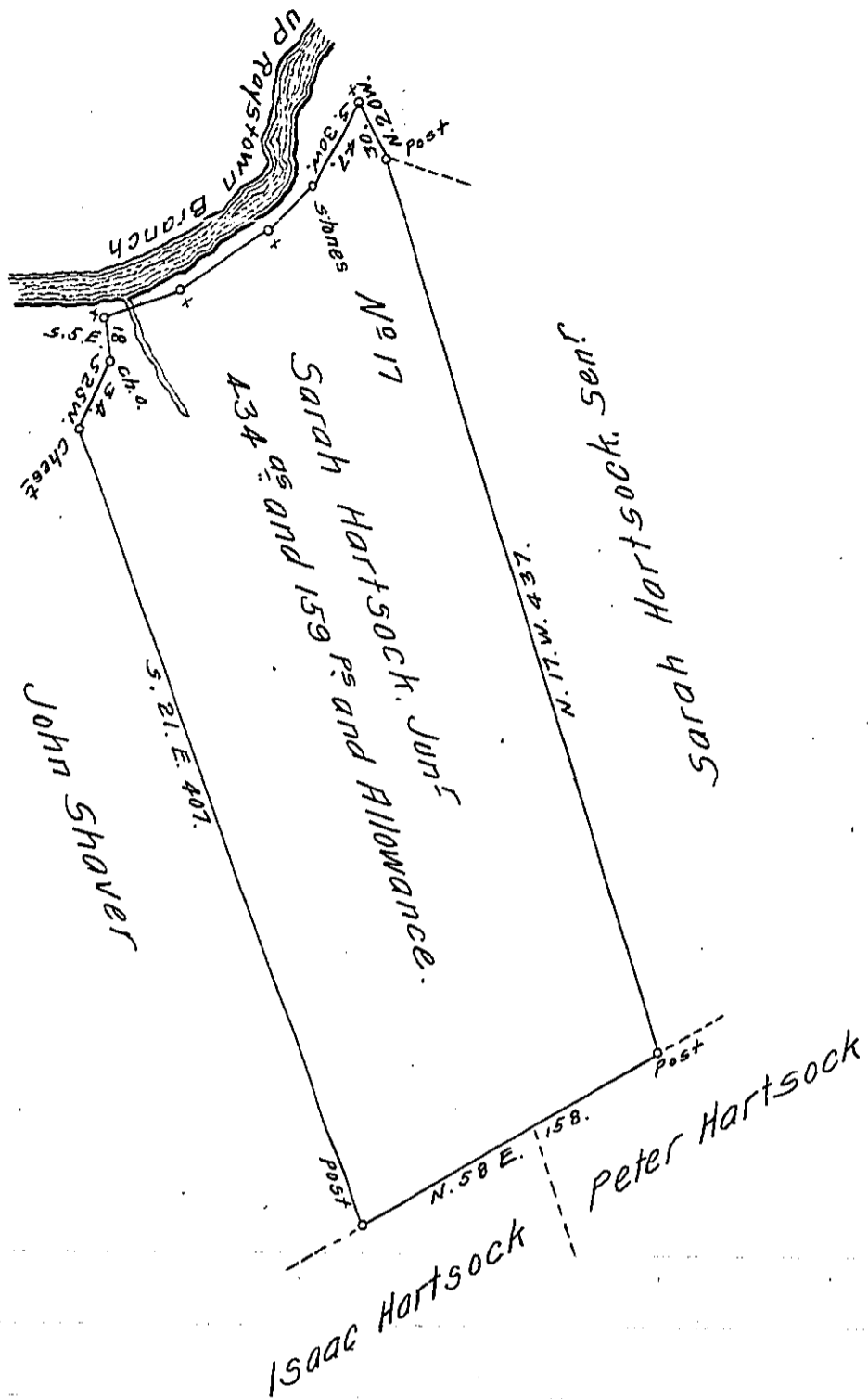


The Courses
and distances
Up River from
Stones to Spruce.

S. 47. W. 30
S. 59. W. 53
S. 72. W. 40.
123. in all to Spruce



Situate in Hopewell Township Huntingdon County. Containing
Four hundred Acres. and one hundred and fifty nine Acres. And
the usual allowance for Roads. Surveyed the 8th day of May 1794.
In pursuance of a Warrant in the name of Sarah Hartsock. Junr
dated the 18th day of March 1794.

John Canan. D. S.

To Daniel Broadhead Esq^r }
Surveyor General.

IN TESTIMONY that the above is a copy of the original remaining on file in
the Department of Internal Affairs of Pennsylvania, made
conformably to an Act of Assembly approved the 16th day of
February, 1833, I have hereunto set my Hand and caused
the Seal of said Department to be affixed at Harrisburg,
this fifth day of April 1911.

Henry Houck
Secretary of Internal Affairs.